

# Hilton Prince Kuhio Waikiki

**Location:** Honolulu, Hawaii

**Goal:** Significantly reduce scale build up in Dish washer

## Installation Details

**Model of Water Conditioners:** S38

**Pipe Diameter (OD):** 3/4"

**Pipe Material:** galvanized

**Installation location:** on the pump of the filter between the heater and the dish washer

**Installation Date:** June 17, 2011

HydroFlow S38 water conditioner was installed June 17, 2011.



**Before and After Pictures**

06/17/2011



03/12/2012





**Before and After Pictures**

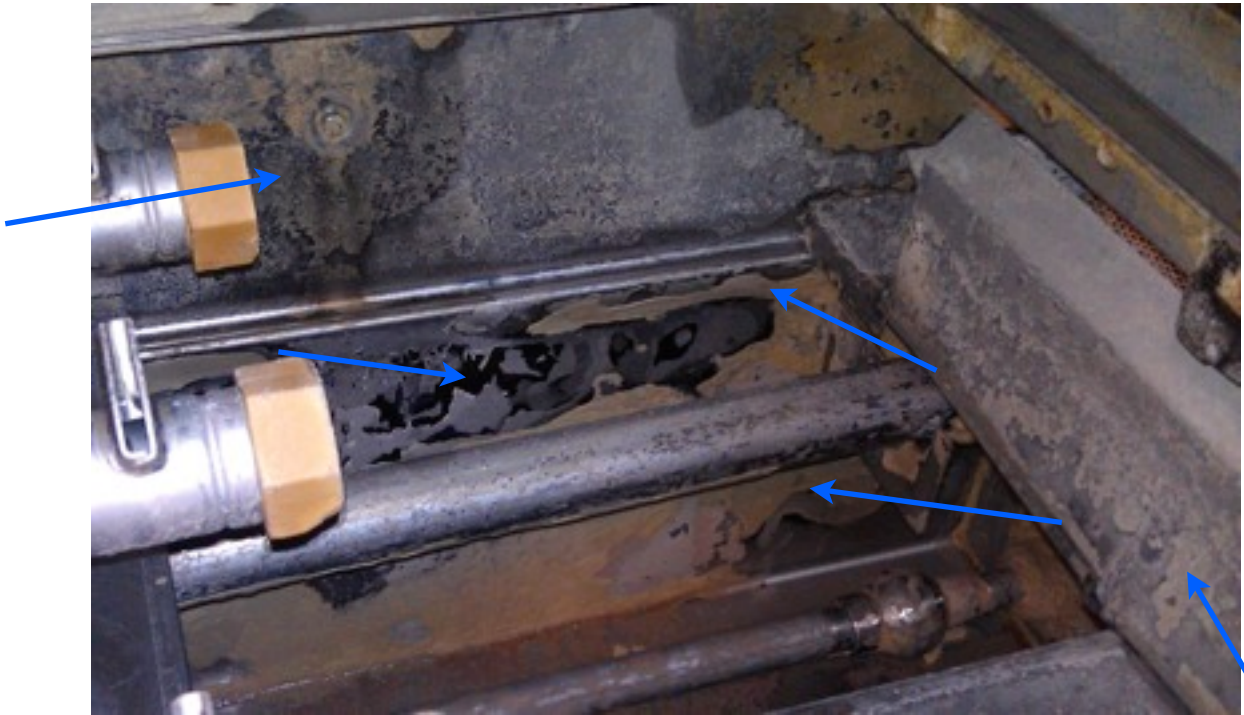
06/17/2011



03/12/2012



11/10/11



3/12/12





06/17/11



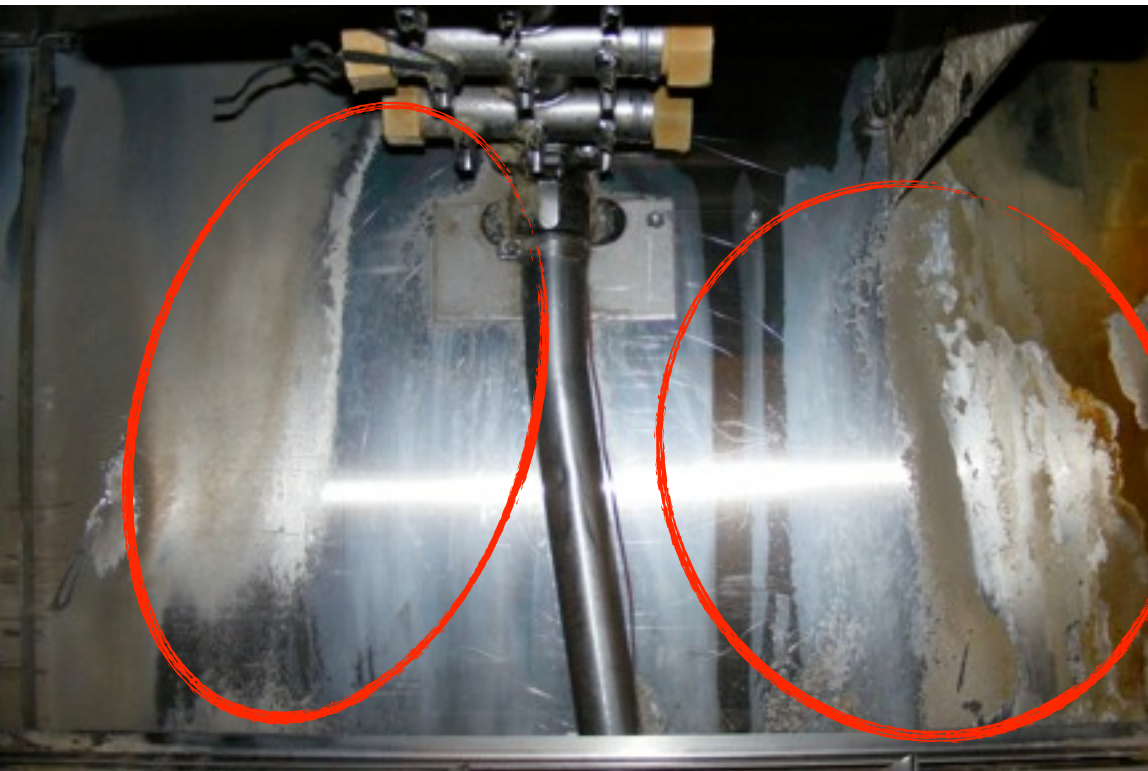
3/12/12



06/17/11



3/12/12





06/17/11



3/12/12



### **Field Conclusion**

**Limescale build up reduction:** Noticeable reduction of limescale build up.

Note: the maintenance person came to us in march 12, 2012 and thanked us for the solution supplied, because he no longer had to scrub the inside of the dishwasher, which was an unpleasant job with no reward.

**Maintenance:** “Cleaning and using LineAway is recommended” until limescale is reduced or eliminated, after that no maintenance required.

**Estimated cost savings and benefits:** Heat exchangers are working more efficiently, the water heaters will last longer. There will no longer be any accumulation of limescale in the dishwasher and will increase it's performance. Significant reduction of water spots on the dishes, specially glass .