

# PHYN PLUS INSTALLATION GUIDE

## PRE-INSTALLATION CHECKLIST:

- Check that pipe diameter is **no larger than 1 ¼"**
- Ensure that you have the appropriate fittings. Phyn Plus has 1" NPSM (straight heads). The fittings provided by Phyn will reduce this to ¾" NPTM. Adapt accordingly *after* the Phyn device.
- Check that home's pressure is **less than 125psi**. This is the maximum working pressure for the Phyn Plus device. You can check pressure at the spigot.
- Check that there is a **power outlet accessible within 15 feet** of where the device will be installed.
- Inform homeowner** that their water will be turned off for approximately 2 hours while you complete the installation
- Verify that Wi-Fi is available** at the point of installation with homeowner. Ensure that they have their network ID (SSID) and password available.



## TOOLS YOU MAY NEED:

### *Copper installation*

- Torch & tank
- Soldering flux
- Pipe cutter
- Sand paper or fitting brush
- Deburring tool
- Tape measure
- Level
- Drill and Drill bit
- Teflon tape
- Adjustable wrench

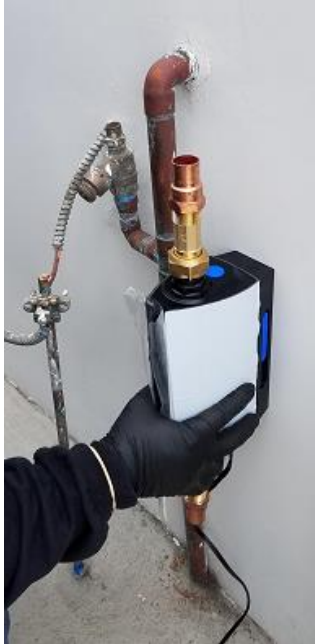
### *PEX installation*

- Crimper/Connector
- Tape Measure
- Level
- Drill and Drill Bit
- Plumbers Tape
- Adjustable wrench

## INSTALLATION STEPS:

### STEP 1 – Decide where Phyn Plus will be installed

- Find where main water line enters the home, typically near the existing Shutoff Valve.
- Phyn Plus can be installed horizontally or vertically
- Device is installed **AFTER Pressure Regulating Valve (PRV) and AFTER existing Shutoff Valve.**
- Device installed **BEFORE irrigation lines**, and before any other pipes split off to rooms & fixtures
- Minimum space to ground from bottom edge of device is 12"



**⚠️ CONSULT INSTALLATION MANUAL IN BOX FOR ADDITIONAL SAFETY WARNINGS**

### STEP 2 – Drain the pipes in the home

- Open a faucet/spigot at the lowest point of the home, open sink faucets and flush toilets.

### STEP 3 – Attach fittings and adaptors to device



**⚠ DO NOT SOLDER DIRECTLY TO PHYN DEVICE.** Device can over heat and electronic parts may get damaged. USE INCLUDED FITTING WITH GASKETS.

**STEP 4 – Measure the space where device will be installed**

**STEP 5 - Cut pipe with space to allow for device + fittings and adaptors**

- In areas where there is not enough space to fit the device in-line, you may need to create space by “bumping out” and adding pipes. If this is necessary, please minimize the use of 90 degree angles to ensure there is minimal loss in water pressure.
- Clean your cuts to ensure that there is no debris left in or around the pipes.

**STEP 6 – Dry-fit the mounting bracket (which is also the power supply) on wall and mark drill holes**



**⚠ DEVICE IS INSTALLED IN DIRECTION OF WATER FLOW.** See arrow on back of device to ensure device is oriented correctly. Side with blue button is the where water should be

flowing “OUT” to the home. Opposite side is where water should flow “In” from the main water line.

**STEP 7 – Drill and install the mounting bracket to the wall with included anchors and screws**



**ToolKit:**



**STEP 8 – Install Phyn Plus device and fittings**



**IF YOU NEED TO SOLDER CONNECTIONS, REMOVE THE DEVICE FROM THE CONNECTIONS AND THEN REATTACH AFTER YOU ARE FINISHED SOLDERING**

**STEP 9 – Turn water back on. Ensure there are no leaks in connectors, joints or surrounding pipes.**

**STEP 10 – Plug in device, use included zip ties and zip-tie mounts to secure loose power cable.**

**STEP 11 – Inform homeowner and have them pair the device to their home network.**

**IF YOU NEED ASSISTANCE, PLEASE CALL 877.749.6792**